

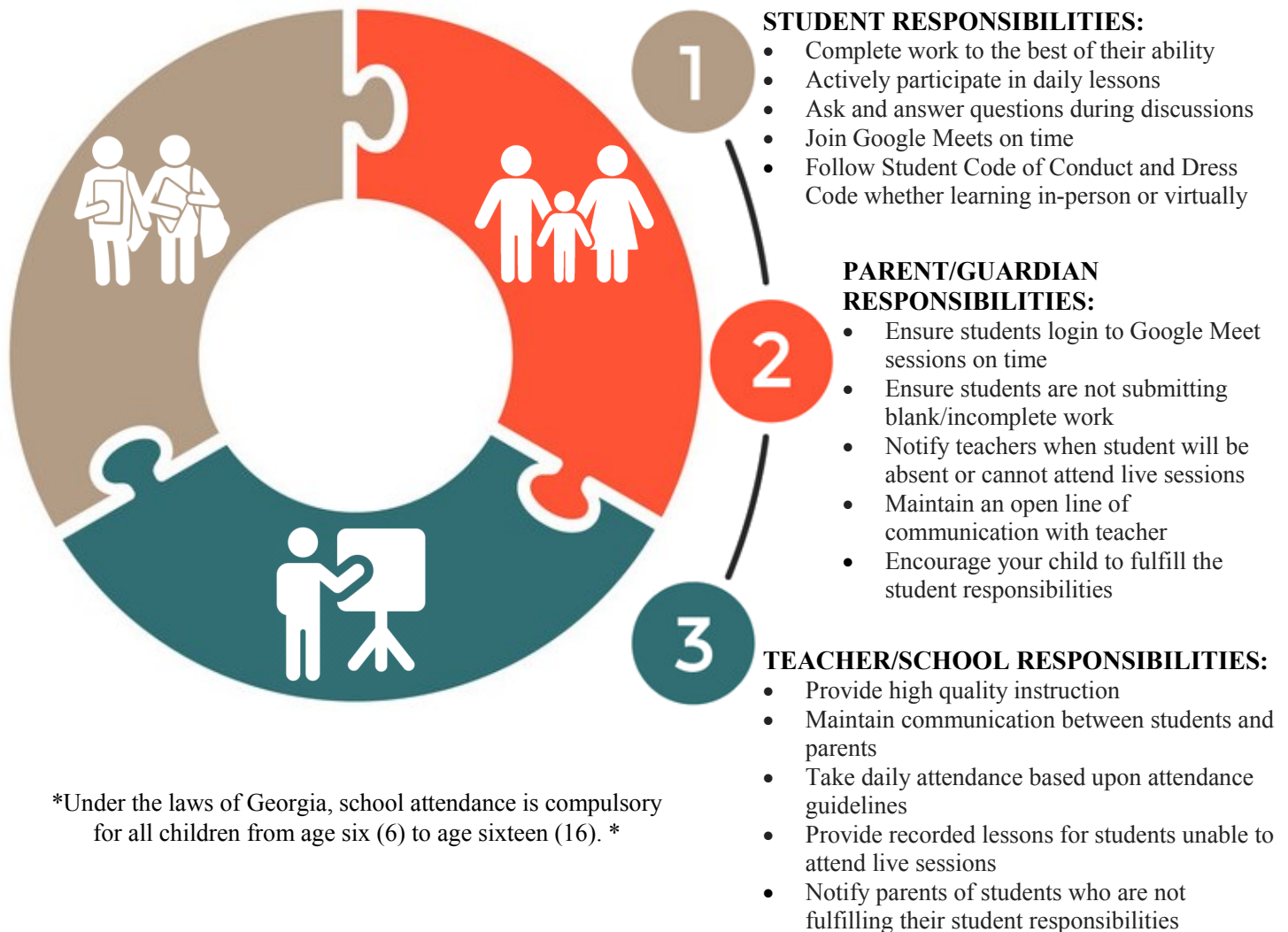


GSCS Attendance Guidelines for Second Semester 2020-2021

These guidelines will begin on January 6, 2021.

- The mission of Griffin-Spalding County Schools is to empower students to graduate college and career ready. Attendance is a key component to accomplishing this mission and promoting student success.
- In light of the COVID-19 pandemic, we have provided a great deal of flexibility in the area of attendance during the first semester 2020-2021.
- In keeping with the mission and vision of our school system, the time has come to tighten our attendance guidelines in order to provide the structure to foster student engagement and achievement.
- The safety of our students and staff remains paramount. For our in-person learners, please stay home if you are experiencing symptoms related to COVID-19.

We all work together and share the responsibility of student success.



*Under the laws of Georgia, school attendance is compulsory for all children from age six (6) to age sixteen (16). *

Attendance Guidelines / Engagement

- Attendance is taken daily for both remote and in-person learning.
- Attendance and engagement are important for student success.
- Students are expected to participate in live instruction for both remote and in-person learning.
- Remote Learners will be marked present if they attend the Live Google Meets instructional sessions that are identified in their Remote Learning Schedule for their classes. If a student is unable to participate in the Live Google Meets instructional sessions, the parent/student must contact the child's teacher in order to view the recordings and submit completed work for attendance (being marked present is tied to attendance, not grades).